



**MATTCALLAGHAN**  
PROPERTY



20 Castelnau Street Caringbah South, NSW



5



3



4

## ULTRA-CONVENIENT    SPACIOUS    FAMILY ENTERTAINER

Relaxed family living close to the local school, shops, cafes and park?  
Fresh exteriors highlight the home which was built circa 2011?  
Walk the kids to school and enjoy your choice of morning coffee?  
This is the one you've been waiting for...

**Council Rates:** \$597.10 p/q

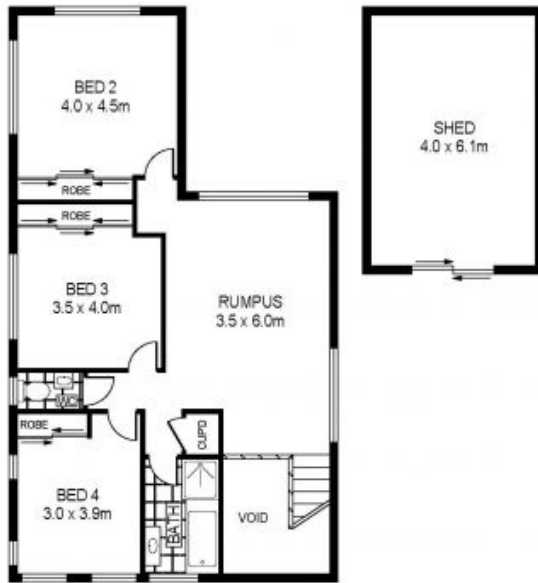
**Water Rates:** \$299.74 p/q

The complete package for relaxed family living, the home has been designed to entertain and enjoy. Occupying a large parcel of land (727m2 approx.) and backing onto the local park, the home will please the most fastidious buyer with all of the opportunities it presents to you.

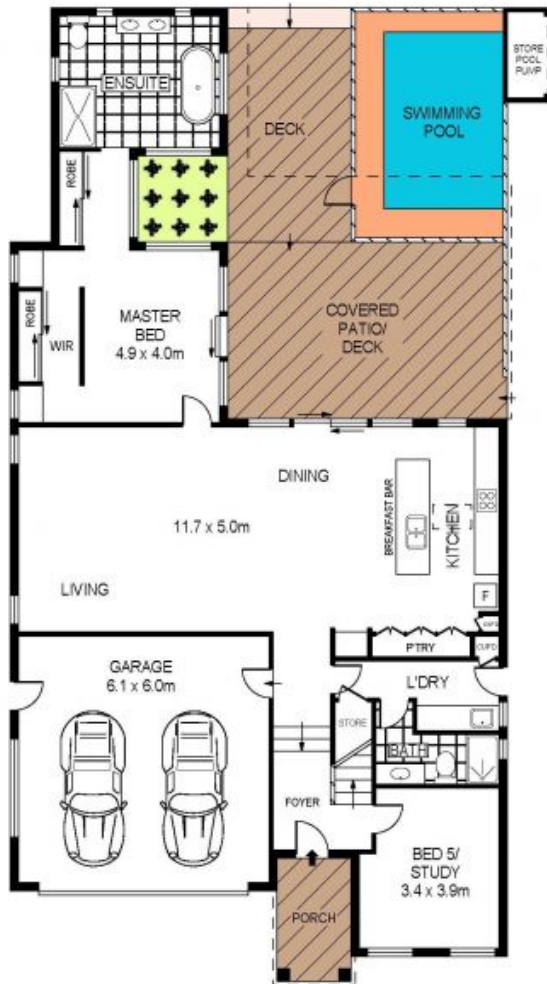


**Matthew Callaghan**

0411525606



FIRST FLOOR



GROUND FLOOR



SITE PLAN  
(NOT TO SCALE)



SCALE (METRES)

PLANS SHOWN ONLY INDICATIVE OF LAYOUT. DIMENSIONS ARE APPROXIMATE.  
Ref. No. 66192



MATTCALLAGHAN



MATTCALLAGHAN



20 Castle Hill Street

Caringbah South, NSW

CARINGBAH SOUTH