

7/39 Chapman Street Gymea, NSW



2



1



2

Convenient Easy Living

Take a short stroll in the morning to an array of cafes for your favorite coffee...

Leave the car at home and enjoy a meal at the Gymea Hotel...

Enjoy a leisurely walk to any of the nearby parks...

This is the one you have been waiting for...

Perfectly positioned in a convenient and peaceful part of Gymea with access to local shops, parks, and schools. Boasting a bright north east aspect, enjoy relaxed, low-maintenance living with the Gymea's vibrant community close by.

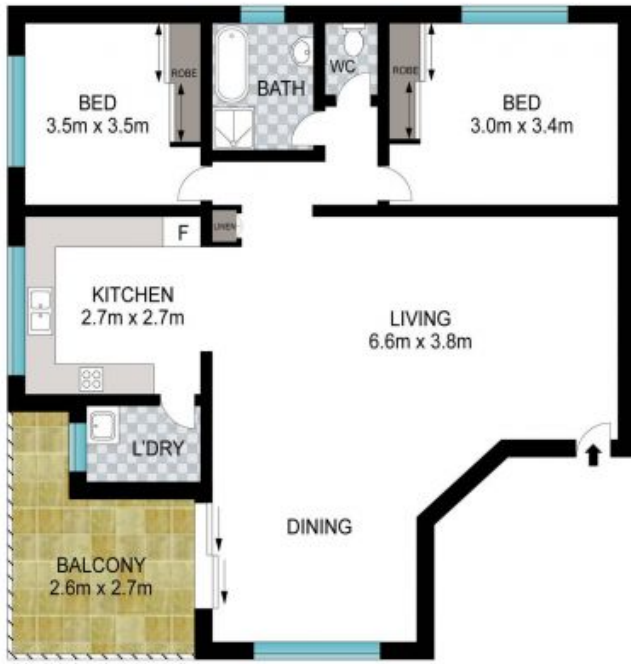
Features include;

- Modern kitchen with dishwasher.



Matthew Layton

0414470862



7/39 Chapman Street

Gymea, NSW