

8/8-12 Koorabel Avenue Gymea, NSW



2



1



1

Tranquil Leafy Outlook

Relax and unwind on your balcony, soaking in the peaceful leafy outlook...
Walk up to Gymea Village or hop on the train for an easy commute into the city...

Treat yourself to breakfast at Hazelhurst Art Gallery with parklike surroundings...

This is the one you've been waiting for...

Council Rates: \$367.40 p/q

Water Rates: \$173.29 p/q

Strata Rates: \$723.00 p/q

Features:

- Spacious open plan living and dining area seamlessly connects to a West-facing balcony
- Sparkling white family sized bathroom offers both a separate bath and shower
- Less than 200m walk to Gymea village and train station and fifteen minutes' drive to Cro



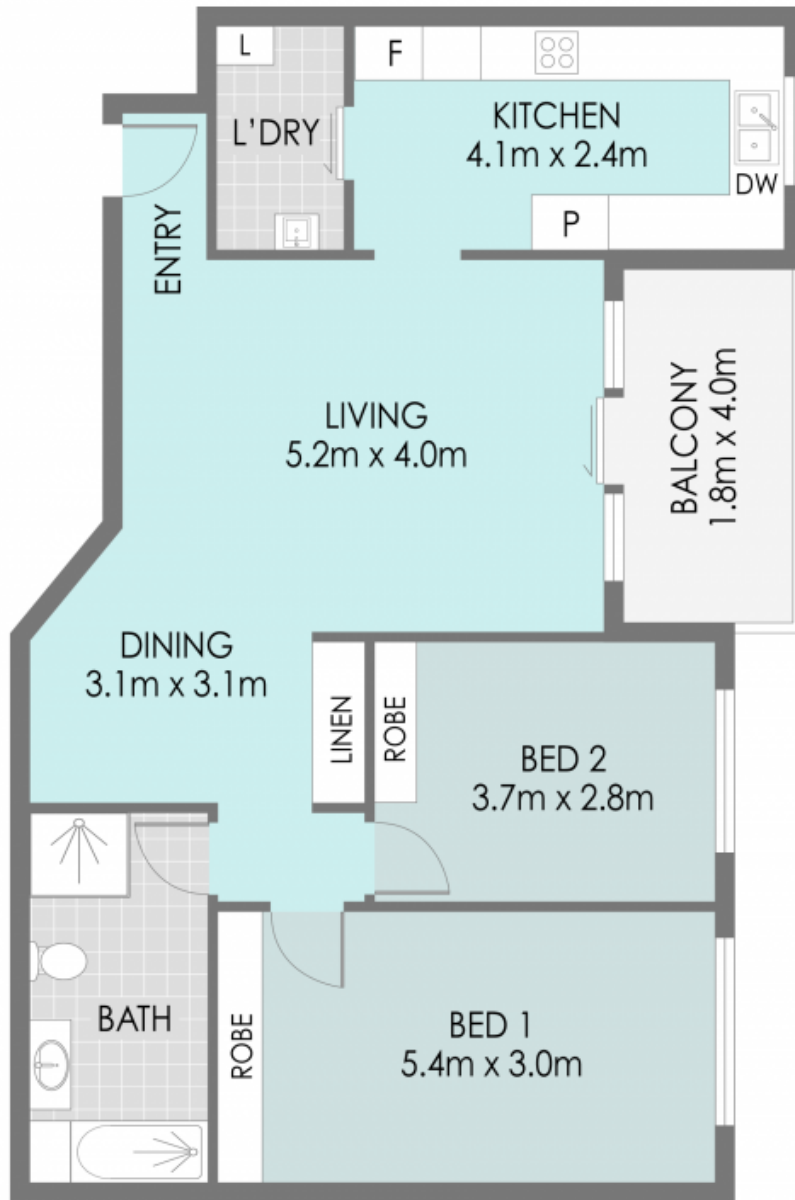
Melissa Hatheier

0419213146

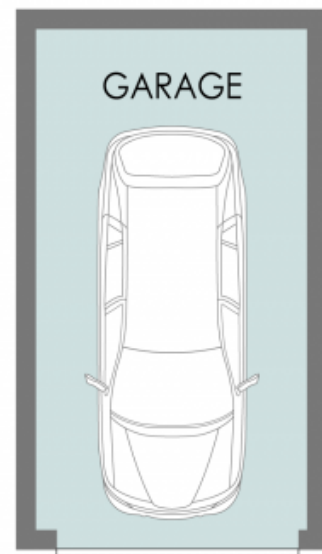
Matthew Callaghan

0411525606

8/8-12 Koorabel Avenue, Gymea



LEVEL TWO



GROUND LEVEL

PLANS SHOWN ONLY INDICATIVE OF LAYOUT. DIMENSIONS ARE APPROXIMATE.

8/8-12 Koorabel Avenue Gymea, NSW

